



# QuickStab® Professional

(c)Copyright 2003-2005 Energy Consulting International, Inc. All Rights reserved worldwide

## Fastest Maximum Loadability Predictor in the Industry

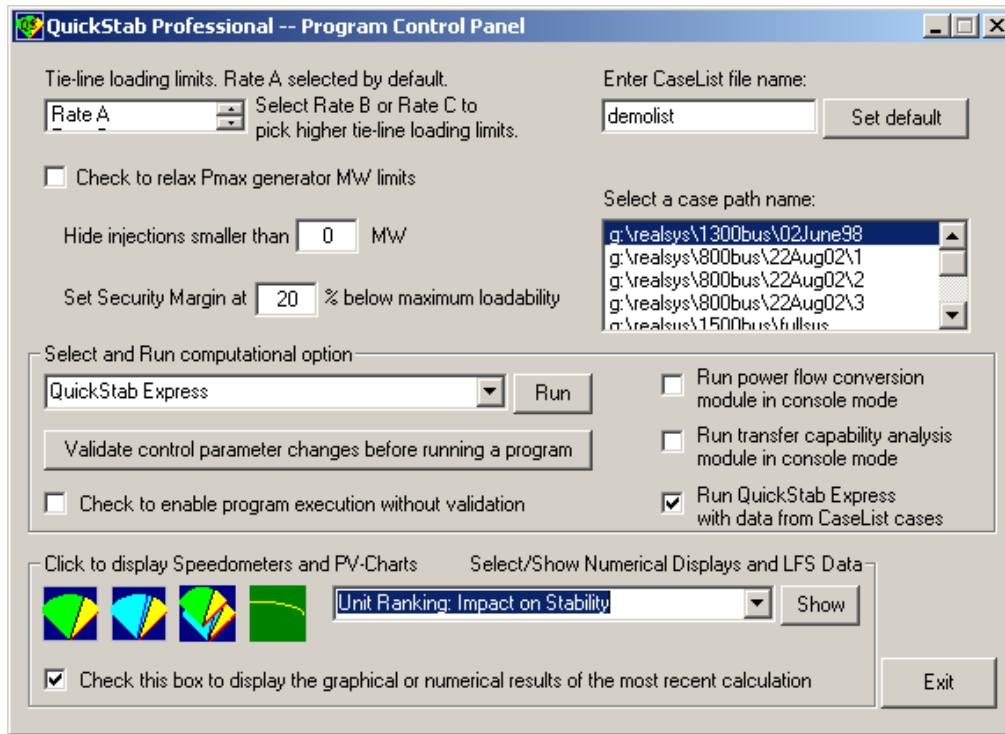
- ✓ *predicts how far from blackout is the system's operating state*
- ✓ *implemented in real-time in multiple SCADA/EMS systems*
- ✓ *used off-line and on the Web in operations and planning by utilities in US, Latin America and Europe*



Here's *QuickStab® Professional* -- the newest addition to the family of fast voltage stability applications developed by Energy Consulting International, Inc. (ECI) for power system operations and planning. The program uses the field-proven MultiArea QuickStab® computational engine, now enhanced with *QuickStab® Express*, and comes with its own text editor -- all integrated with, and supported by, a brand new, greatly enhanced user interface.

### Integrated Environment

All program options and modules are executed from the control panel. They are available any time, all the time, so you can easily set up and run the simulation scenario that best fits the purpose of your analysis. In a sense, it's like driving a car -- you access the controls and see the information without ever having to quit the driver's seat. Similarly, you set and modify the values of the execution control parameters, select a particular



computational module, decide how to run it, and pick up a solved load-flow case for analysis without having to go back and forth between menus and pop-ups. This allows you to execute multiple runs of the same case with different parameters and see instantly how the calculation assumptions affected the results.

## Entirely Redesigned User Interface

In spite of the many changes in the operating systems landscape during the last decade, the look and feel of the user interfaces remained remarkably stable. And since Windows 2000/XP and the .NET paradigm seem to be the way to go, we have entirely redesigned the QuickStab® Professional interactive shell and implemented it with Microsoft Visual C++.NET.

We did maintain, however, the friendly, easy to learn and field-proven program execution concepts. If you've used QuickStab® before, you'll benefit from QuickStab® Professional without prior training -- if you're new to this application, you'll be up and running in minutes.

In addition, the new user interface supports the program's ability to concurrently run several cases. The results windows can be stacked, minimized or placed side by side, so you can easily review and compare the outcome of different calculations.

## New Modules -- Interactive and Stand-Alone

A new computational module was added -- *QuickStab® Express*, which performs the entire processing sequence in one step. No intermediate data are stored on, and

read from disk. One single click triggers the calculations and displays the results. This is ideal for the periodic and automatic execution of cases that do not require fine tuning of the simulation parameters.

Another addition is the *LFS TextEdit*, a versatile data and text utility that allows you to review input data, examine output results, and create text files and case lists needed for input.

Both *QuickStab® Express* and *LFS TextEdit* come integrated with the interactive shell but can also be executed on a stand-alone basis.

## Field-Proven Features that Got Even Better

The new package is powered by the field-proven Multi-Area QuickStab®. You'll get the same speed, reliability and flexibility as before, along with new functions, e.g., the calculation of the maximum transfer limit on user-defined area interfaces. The unique ability to use QuickStab® computational modules separately from the interactive shell has also been maintained.

These modules are mutually independent, execute "silently", i.e., without any notice on CRT, or in "console mode", and place the results in text and \*.csv files, so you can easily open them with any text editor or spreadsheet. For example, you can invoke the stability engine from within any load-flow program to determine how far from instability is the load-flow solution. Or you can integrate it with your network analysis software, off-line or in real-time, to perform fast voltage stability calculations that otherwise would not be available in your system. You can also combine the computational executables in batch files and run them automatically, at predetermined times, or on request.

## Availability

QuickStab® Professional is available now to utilities, consultants and universities. For additional information or to request a *fully functional* CD demo, please contact us by phone (646)536-3891, e-mail [info@eciqs.com](mailto:info@eciqs.com), on the web <http://www.eciqs.com> or in writing: *Energy Consulting International, Inc.*, 405 Lexington Avenue, 26th Floor, New York, NY 10174.